

F

279

C4C5

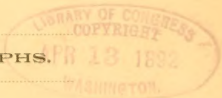




CHARLESTON, S. C.

ILLUSTRATED.

INDELIBLE PHOTOGRAPHS.



15997
X

Copyright, 1892, by A. Wittemann, 67 & 69 Spring Street, New York.

THE ALBERTYPE CO., N. Y.

I. G.



CHARLESTON HARBOR.



St. Andrew's Episcopal Church, New York City, N. Y.



SOUTH BAY 1871.



BUST OF TREMORÉ SIMS— SOUTH BATTLE BL.



CITY HALL



EXETER, N. H.



CATHEDRAL CHURCH, 1891-1900





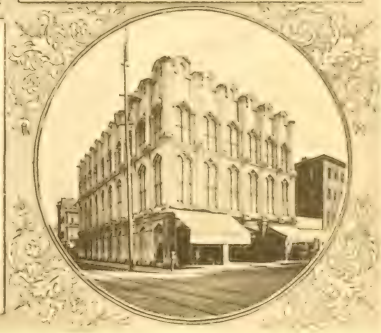


View from St. Bernard's Street.



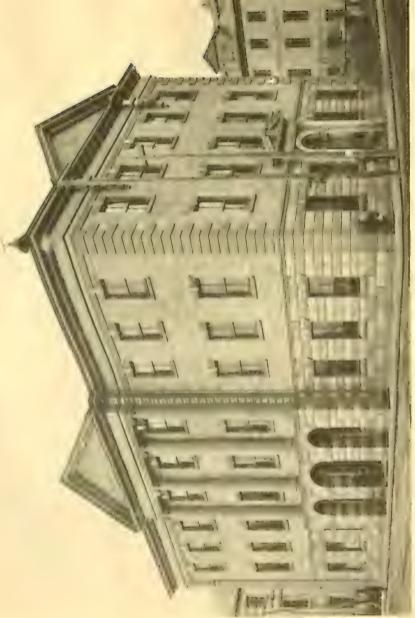
1850-1851





HALL OF THE WAR DEPARTMENT
BOARD HOUSE FOR OFFICERS.

STREET VIEW OF THE
WAR DEPARTMENT.





VIEW OF ST. LOUIS, MO., FROM THE BALCONY OF THE HOTEL MARIENNE.



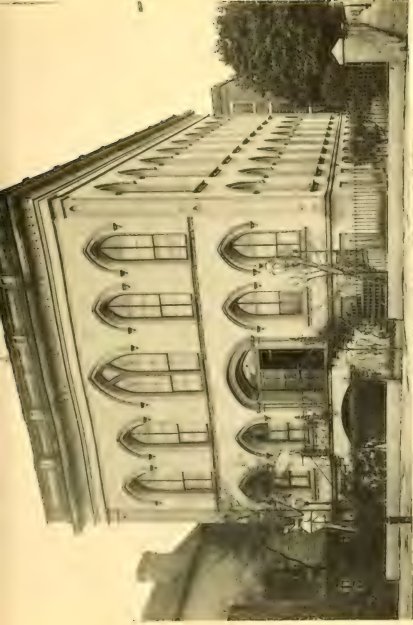
TRAMP STEAMER LOADING COTTON AT KENNEBEC WHARF.



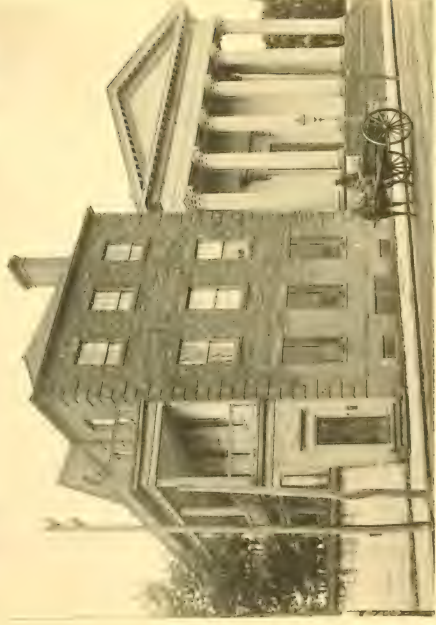
KING STREET.



Wool Bales in the Warehouse, Port of London



PHOTOGRAPH BY J. H. WILSON, 1877.



PHOTOGRAPH BY J. H. WILSON, 1877.



THE MINUTE MAN MONUMENT, CONCORD, MASS.
THE MONUMENT WAS DEDICATED IN 1875.



WOMEN VISITING THE MONUMENT





South River



GEORGE W. E. DODD, ARCHITECT



W. H. E. C. Co.



U. S. DEPARTMENT OF THE INTERIOR

PHOTOGRAPH BY

W. H. RAY

CALVIN DENNIS
EDWARD
BIRK BECKET



HIGH SCHOOL



WILSON COMPANY, CORNER OF STATE AND BROAD STS.



WILLIAMSBURG COLLEGE



FRONT PORCH



Western University of Louisiana



St. James Episcopal Church, W. Va. (1880)



ONASSIS HOTEL.



THE UNIVERSITY COLLEGE



STREET SCENE IN THE CITY OF BOSTON



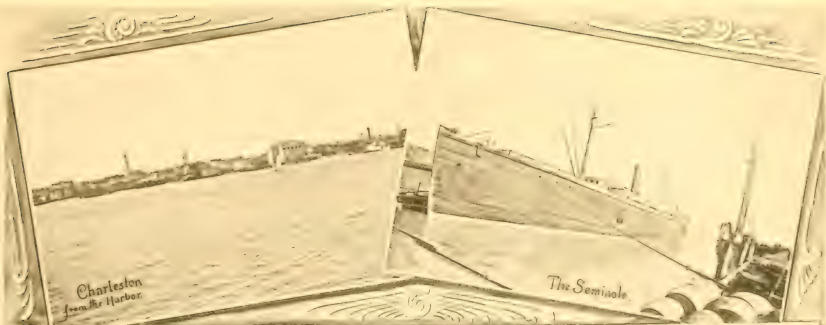
DEBRIS AT EIGHTH AVENUE, FIVE MINUTES AFTER THE EXPLOSION OF THE TOWER



Grand Hotel



FORT SUMPTER.



The Naval Armament of Charleston



100. View of the town of St. John's from the water.



OF THE ...
...
...





GENERAL MONUMENT, MASSACHUSETTS



Planting rice seedlings



WATER BURY
 FISHING BOATS

THE BERRY
 MARKET

THE BERRY
 MARKET

X122





LIBRARY OF CONGRESS



0 014 418 543 2 ●